

Dermeo®

 French designer and manufacturer

 ISO 9001  ISO 13485

Compact and portable aesthetic pulsed light device

LTFLASH®

New technology for aesthetic treatments



EASYLAMP®

Worldwide innovation: DERMEO has developed the first
water-cooled LAMP-CARTRIDGE interchangeable by the user

DHR

Dynamic Hair Removal
Processing mode by scanning
Up to 450 000 pulses



ORGANIZATION

Our research,
our expertise



The company

Founded in 2000, DERMEO® became the only French IPL manufacturer offering medical devices combining the best technological features with the best results. At the top of an evolutionary innovation, DERMEO® has technological and clinical expertise.

DERMEO is involved in designing, manufacturing, distributing, sales and after sales services of medical devices.

**DESIGN, MANUFACTURING,
DISTRIBUTION, SALES, AND AFTER
SALES OF MEDICAL AND AESTHETIC
DEVICES.**

Our quality,
your safety

The guarantee of a manufacturer that offers a complete management system of quality

DERMEO® provides you with the knowledge of an ISO 9001 and ISO 13485 certified expert. Compliance with these standards is a guarantee of quality for both our customers and our suppliers.



French quality production

The high quality of DERMEO's production tools complies with the French manufacturing protocols and enables total transparency and traceability from the designer to the patient.

DERMEO® only selects the best components from French or European origin. The manufacturing steps are validated under our quality management system of control and by inspectors from our notified body who check the conformity of the devices on the manufacturing line with the production files.

The strategy of innovation and quality coupled with excellent knowledge of international regulations has enabled DERMEO® to expand to all five continents.



Innovation for performance

Evolutionary technology

DERMEO® is in constant development and recruits only the best engineers in mechanics, electronics, energy conversion, computer software development, optics, and composite materials, which has enabled DERMEO® to be awarded several patents.

International patents

French patents n° 11 58334, 09 56126, 09 56124
European patent n° 23 44248
U.S. patents n° 8 672 987, 8 721 697
Canadian patents n° 2 736 769, 2 737 231

Medical research

Clinical research investments are made in partnership with groups of specialist doctors to assess the performance, security, and innocuousness of the devices that are on the market.



New range compact and easily transportable

Compact and lightweight

Thanks to the miniaturization of components, the new range of pulsed light system is lighter and more compact, offers exciting new treatment possibilities (ability to perform treatments at home).

The LTFLASH®, easily transportable, is an outcome of focused technology to obtain high-quality and professional results.



**DERMEO'S RESEARCH,
RECOGNIZED QUALITY
VERIFIED SAFETY**

DHR

Dynamic Hair Removal



DHR technology : Dynamic Hair Removal

This new technology makes it possible to provide care to the treated area by scanning it. It delivers a continuous energy which gradually increases the temperature at the target's chromophore area. This program is particularly suitable for hair removal on light and dark skin.

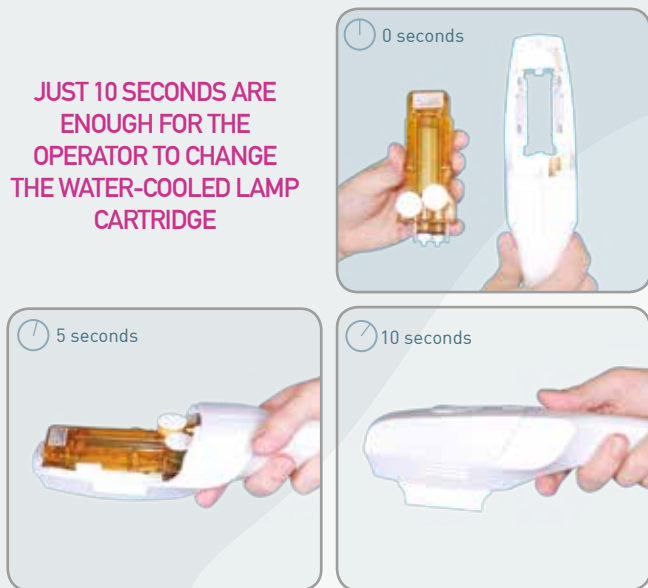
In DHR mode, the LTFLASH® device is able to deliver a maximum pulse repetition frequency of 7 pulses per second (7Hz). This technology reduces the treatment time for the operator, and, due to a softer flash, raises the level of comfort for the customer.

TECHNOLOGIES

Easier, faster, more functional

Interchangeable EASYLAMP® LAMP CARTRIDGE

Worldwide innovation: DERMEO® has developed the first water-cooled LAMP CARTRIDGE which is directly interchangeable by the user. When the lamp has to be changed, there is no need to send it back to the workshop or to contact a technician.



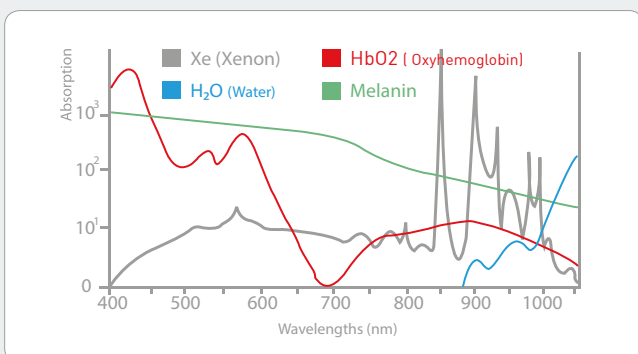
JUST 10 SECONDS ARE ENOUGH FOR THE OPERATOR TO CHANGE THE WATER-COOLED LAMP CARTRIDGE

Patents granted

In a few seconds, the lamp can easily and safely be replaced.

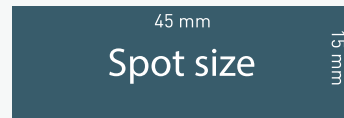
The replacement of the LAMP CARTRIDGE is simultaneously and without extra cost accompanied by the complete replacement of the cartridge containing the lamp, the optical cavity, the reflectors, the anti-UV filter and the embedded electronics

Absorption curve of chromophores by level of wavelength



Interchangeable optical blocks

To ensure maximum effectiveness of the treatments, the surface of the available optical guides is 6.75 cm² (45 x 15 mm) and it is available with 3 different filtrations.

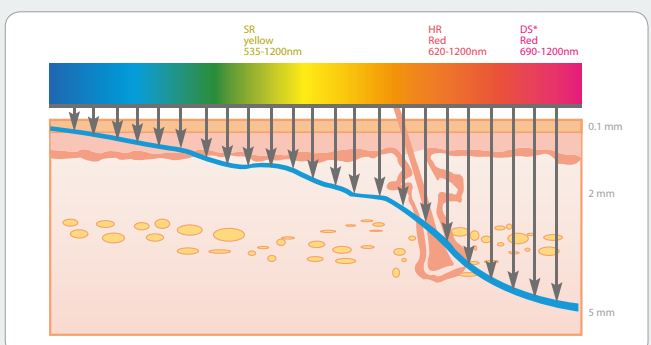


Reflective filters' benefits

A filter is composed of several layers laid on a light guide made of optic substrat. The reflective filters allow multiband selective filtrations, and, therefore, the wavelengths are exactly adapted to the absorption peaks of the targeted chromophores.

The non sampled energy of the ray of light is reflected back into the lamp where the heat is dissipated by the water cooling system. Results: No heating of the quartz, nor at skin level.

Depth of the penetration of the light depending on the selected wavelength



TECHNIQUES

Comfortable, fast & efficient treatments thanks to the water cooling system

Water cooling for endurance and an exceptionally long life

Even at maximum power, the device can work for hours without overheating the lamp or optical blocks. This is due to the continuous cooling of the lamp and filter, and the absorption of the infrared rays by water.

The stainless steel radiator facilitates a rapid and efficacious cooling of the lamp.

Optimal effectiveness through power up to 18 J/cm² at cartridge level

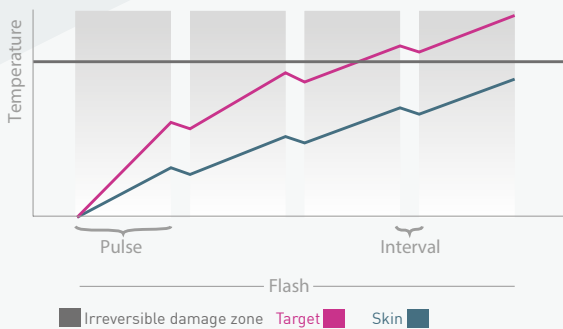
To achieve optimal results, maximum power is needed for the treatment process: 18 J per cm², meaning more than 240 Joules per flash at lamp level.

This leads to max 18 Joules per cm² at the level of the crystal.

Communicating systems, powerful, efficient and effective

A balanced train of pulses for more security

To avoid risk of burning or discomfort caused by a single flash or a too long flash, all emitted flashes are cut into several pulses. Each pulse raises the target temperature, while the intervals between pulses allow the skin to dissipate the heat.

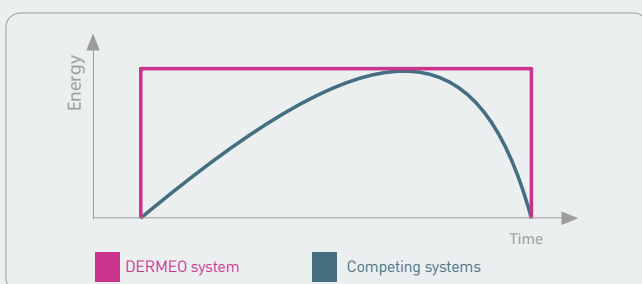


Balanced pulses for more comfort

Balance of pulses grants to get the same density of energy from the first until the last pulse. This balance of train of pulses leads to an efficient treatment even with difficult skin conditions.

A "simmer" for powerful and effective "square" pulses

The "simmer" enables the lamp to be powered up before the flash. The required energy level is therefore reached more quickly and efficiently than with other pulsed light systems. With the simmer in use, the pulse comes in a "square" shape."



LCD color touchscreen

LTFLASH[®] has a resistive 5.7 inch color touchscreen, which provides excellent legibility and comfort to users, even when wearing gloves.



Evolutive software for easy updating

The software is embedded on an SD card which facilitates a quick and easy update of the medical systems via internet.



**TO ACHIEVE THE BEST RESULTS,
MAXIMUM POWER IS NEEDED**

A logbook which enables you to access to complete information

At any time, access with your computer the number of flashes used per transaction, and view the date and time of carried out treatments.

Remote access

The user has the ability to remotely monitor the use of the system through optional networking software.



OFFER

Profitability,
flexibility,
efficiency

LTFLASH[®]

LTFLASH[®], from 8 to 18 J/cm², depending on the filtration of the optical guide.

Applications:

- Light Skin Hair removal*
- Dark Skin Hair removal*
- Rejuvenation*

- 1 EASYLAMP[®] LAMP-CARTRIDGE
- Accessories
- Marketing package
- 2 years full warranty on labor & parts



Marketing, sales, legal

Sales arguments

DERMEO[®] provides its users with relevant marketing material, such as a sales arguments guideness containing the most frequently asked questions with appropriate answers, which can be used when interacting with patients that are interested in treatments by DERMEO's devices.

Training

The training program is supported by 2 volumes of training manuals. One is theoretically and technically oriented, whereas the other volume focuses on the practical and commercial aspects. Training videos conducted with our medical consultant doctor complete this training.

Media exposure

DERMEO's products and treatments receive strong national and international exposure in on and offline media.

Clinical and legal

To provide clients with better information and users with better protection, models of quote / informed consent / medical history forms, have been validated and approved by doctors and lawyers and are put at professional's disposal.



Results approved over all applications

Clinical studies, scientific articles

To demonstrate the quality and effectiveness of DERMEO's medical devices, a clinical report was officially established by an independent laboratory, the GREDECO. This study was performed on voluntary patients which were recruited at the hospital of Pitié-Salpêtrière in Paris (FRANCE).



This study enabled DERMEO® to assess the performance of its pulsed light devices on several subjects in real conditions of treatment.

Regarding efficiency, in almost all configurations and on time, excellent results (hair removal, and rejuvenation) were obtained.

For aesthetic treatments such as rejuvenation, spots care and hair removal on light and dark skin, a high level of safety and efficiency have been proven.

**DERMATOLOGICAL AND AESTHETIC TREATMENTS
WITH DERMEO DEVICES PRESENT
HIGH LEVELS OF EFFICIENCY AND SAFETY**

Clinical references

Dr. Sylvie Boinsic
Dermatologist, Pathologist Research Director
GREDECO
Consultant at the Pitié-Salpêtrière's hospital

Dr. Luc Benichou
Consultant Medical Doctor GREDECO

Dr. L. Ben Slama
Stomatologist

M. C. Branchet
Bio-chemist

Mrs. Sophie Blondel
Pharmacist Research Officer of GREDECO

Clinical studies, scientific articles

Rejuvenation

Flashes of pulsed light reduce the effects of skin ageing. The treatment stimulates collagen production, modifies connective tissue, tightens dilated pores, improves skin elasticity and reduces fine lines.

The skin tone is improved, pores are tightened and color is enlightened. The tolerance for this treatment has proven to be excellent.

Care duration : 5 to 6 sessions are necessary at intervals of 2 to 3 weeks.
SR : 535 - 1200 nm



Hair Removal Light Skin

Pulsed light is absorbed by melanin (a colored pigment present in hair). During the growth stage (anagen phase), the light is conducted down to the root of the hair. This light is turned into heat, and it is the heat that destroys the follicle and the root, without side effects. This is called "selective photothermolysis" or "photodepilation."

Excellent results, 80% of hair removed after the third session.

Care duration: 8 to 12 sessions are required at intervals of approximately six weeks.
HR: 620 - 1200 nm for light skin



Hair Removal Dark Skin

The use of a specific filter DS (690nm) makes it possible to safely perform treatments on dark skin. (phototype IV, V and beginning of VI). The specific filtration for dark skin favors the absorption of the pulsed light by melanin contained in hair anchored in tissue, and thus promotes a high level of efficiency of the treatments.

The obtained results are very satisfactory.

Care duration: 8 to 12 sessions are required at intervals of approximately six weeks.
DS: 690 - 1200 nm for dark skin



Dermeo®

189 rue d'Aubervilliers, 75018 Paris, France
T +33 (0)1 72 98 98 72 - F +33 (0)1 72 98 98 73
www.dermeo.com - info@dermeo.com



Paris

Light at the service of innovation

Designer and manufacturer of new technologies
for aesthetic treatments.

Covered spectrum	535-1200 nm
Fluence in J/cm ² at optical guide level	Until 18 J/cm ²
Possible filtrations	LP 535-1200 nm LP 620-1200 nm LP 690-1200 nm Other filtrations upon request
Treatment surfaces	45 x 15 mm = 6.75 cm ²
Repetition frequency	0.3 to 7 Hz
Mode of emission	Multi-pulse, static or dynamic
Number of pulses per flash	4 to 6 per flash
Duration of pulses	2 to 6 ms
Inter-pulse interval	5 to 30 ms
Maximum number of flashes (pulses) per lamp cartridge	30.000 (450.000)
DHR mode pulses repetition max (dynamic)	7 Hz
Setting mode	Automatic presets
Networking possibilities	USB, SD, RJ45 optional
Control panel	LCD TFT resistive touch screen,
Lamp cooling system	Internal water cooling
Internal water circuit	Deionized water
Dimensions (H x W x D) in mm	334 x 339 x 497

Weight	10 Kg
Electric current	100-240VAC
Input frequency	50/60Hz
Input protection	T 6.3 A H 250VAC
Average consumption at maximum power	400W
Protection category	1, type BF
Protection index	IP30
Warranty	2 years warranty on parts and labor
Certifications of the manufacturer	ISO 9001, ISO 13485, ISO 13485 : CMDCAS
Markings and homologations Europe	CE

© DERMEO® - Illustrations and information not contractual. The products and treatments offered by or its distributors may be subject to specific regulations. Also it will suit the user or purchaser of the equipment to check with its distributor and competent authorities on the regulations applicable in the country of use as well as the specific conditions of use of such equipment. Traduction libre nullement engageant pour l'entreprise ; en cas de doute la contrepartie peut demander un document en français et seul ce document en français aura une valeur juridique. The translation of any DERMEO® document made in any language different than French does not engage DERMEO® in case of bad interpretation or contradiction. Only the original document in French has legal value and the customer is free to request this document if any doubts occur.